

FREE PROJECT SHEET, SEPTEMBER 2011

WRAPPED WIRE RINGS



INGREDIENTS

- 10cm of 18 gauge wire (12 - 15cm for larger side spirals)
- 1 meter of 28 gauge wire
- 1 fabulous feature bead

EQUIPMENT REQUIRED

- Round Nose Pliers
- Chain Nose Pliers
- Wire Cutters
- A bead mat to work on
- A smooth round mandrel to bend the wire around, similar to the thickness of your finger e.g. a seed bead tube, fat marker pen, an proper ring mandrel or a serving spoon handle.

MAKE THE BASE

1. Make sure each end of the wire has a flush cut.

2. Make an open spiral at one end of the wire

3. Bend the middle of your wire around the mandrel to make a smooth curve that will fit around your finger. Adjust the curve as needed so that it fits nicely (and slightly too big) around your finger.

4. Make a spiral at the other end of the wire, try to match the first spiral as much as possible. There should be a gap between your spirals, large enough for the feature bead to fit between.

CHECK: The ring base still fits your finger, and is not too snug.

ADJUST: By making your spirals a bit bigger or smaller if needed to get the fit right.

BEAD AND WRAP YOUR RING BASE

1. Take your 28 gauge wire and hold it with approx 10cm sticking out in the direction of the spiral and the rest pointing down to the ring curve.

2. WRAP the shorter piece of wire up toward the spiral. When you run out of wire, trim the last wee piece off. Push the wrap upwards so that approx half the spiral is covered in a wire wrap.

3. Now, continue wrapping with the longer piece if necessary until your are starting to come down the main curve of wire and are ready to put your bead in place.

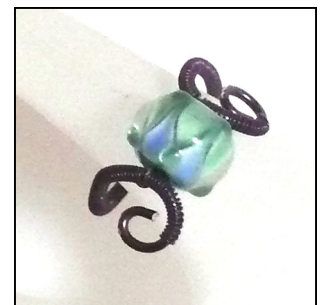
4. Thread your feature bead onto the 28 gauge wire and fit it between the two spirals. Wrap around the opposite spiral, thread back through the bead, and wrap around the original spiral. Pass through another time or two if possible, making sure you finish on the original wrapping side.

CHECK: That the ring still fits your finger!

5. Continue to wrap the 28 gauge wire around the ring base until you come up to the second spiral. Wrap until the second side matches the first side and trim your wire closely.

FINE WIRE WRAPPING TIPS

- be careful not to kink the fine wire
- rather than poke the very end of the wire through the ring base and pull, push the piece closest to the wrap through with your finger (in a curve) and then pull the rest through, this helps prevent tangling.
- Wrap firmly, and on a sharp angle to the LEFT (or right if you are lefthanded) to get nice close tight wraps.
- if your wraps are a bit too far apart, push them firmly up toward the bead to tighten them, and try to continue your wrapping with firmer pressure.



For images of this months project and projects from past months, visit the Project Page on our website.

FREE PROJECT SHEET, SEPTEMBER 2011

WRAPPED WIRE RINGS



INGREDIENTS

- 10cm of 18 gauge wire (12 - 15cm for larger side spirals)
- 1 meter of 28 gauge wire
- 1 fabulous feature bead

EQUIPMENT REQUIRED

- Round Nose Pliers
- Chain Nose Pliers
- Wire Cutters
- A bead mat to work on
- A smooth round mandrel to bend the wire around, similar to the thickness of your finger e.g. a seed bead tube, fat marker pen, an proper ring mandrel or a serving spoon handle.

MAKE THE BASE

1. Make sure each end of the wire has a flush cut.

2. Make an open spiral at one end of the wire

3. Bend the middle of your wire around the mandrel to make a smooth curve that will fit around your finger. Adjust the curve as needed so that it fits nicely (and slightly too big) around your finger.

4. Make a spiral at the other end of the wire, try to match the first spiral as much as possible. There should be a gap between your spirals, large enough for the feature bead to fit between.

CHECK: The ring base still fits your finger, and is not too snug.

ADJUST: By making your spirals a bit bigger or smaller if needed to get the fit right.



BEAD AND WRAP YOUR RING BASE

1. Take your 28 gauge wire and hold it with approx 10cm sticking out in the direction of the spiral and the rest pointing down to the ring curve.

2. WRAP the shorter piece of wire up toward the spiral. When you run out of wire, trim the last wee piece off. Push the wrap upwards so that approx half the spiral is covered in a wire wrap.

3. Now, continue wrapping with the longer piece if necessary until your are starting to come down the main curve of wire and are ready to put your bead in place.

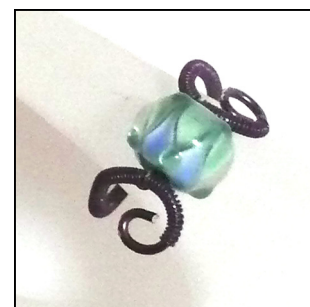
4. Thread your feature bead onto the 28 gauge wire and fit it between the two spirals. Wrap around the opposite spiral, thread back through the bead, and wrap around the original spiral. Pass through another time or two if possible, making sure you finish on the original wrapping side.

CHECK: That the ring still fits your finger!

5. Continue to wrap the 28 gauge wire around the ring base until you come up to the second spiral. Wrap until the second side matches the first side and trim your wire closely.

FINE WIRE WRAPPING TIPS

- be careful not to kink the fine wire
- rather than poke the very end of the wire through the ring base and pull, push the piece closest to the wrap through with your finger (in a curve) and then pull the rest through, this helps prevent tangling.
- Wrap firmly, and on a sharp angle to the LEFT (or right if you are lefthanded) to get nice close tight wraps.
- if your wraps are a bit too far apart, push them firmly up toward the bead to tighten them, and try to continue your wrapping with firmer pressure.



For images of this months project and projects from past months, visit the Project Page on our website.